

## 1 Minimum system requirements

<b>Operating system</b>	<b>64-bit version of:</b> <ul style="list-style-type: none"><li>▪ Windows 11 Pro / Enterprise</li><li>▪ Windows 10 Pro / Enterprise</li><li>▪ Windows Server 2022</li><li>▪ Windows Server 2019</li><li>▪ Windows Server 2016</li></ul>
<b>RAM</b>	8 GB
<b>Hard disk space</b>	Program: 1 GB Data: <ul style="list-style-type: none"><li>▪ Minimum: 10 GB</li><li>▪ Recommended: 50 GB</li></ul>
<b>Serial ports</b>	for devices with RS-232 interface
<b>USB ports</b>	for devices with USB interface
<b>Screen</b>	Minimum resolution: 1024 x 768
<b>Network</b>	10 Mbit/s, stable and permanent Communication via TCP/IP Safety systems, e.g. firewalls, have an impact on performance.
<b>PDF reader</b>	A PDF reader must be installed on the computer.
<b>Optimized performance</b>	Performance improvements are available from MagIC Net 4.2. Existing databases and methods must be migrated into another data format on a one-time basis to improve performance after a MagIC Net update ( <i>see chapter 6.2, page 15</i> ).

The Windows user must have administrator rights in order to be able to install the **MagIC Net** software.

## 2 Customizing energy options

During the determination, data loss may occur or there may be communication problems with certain energy options of the operating system. Proceed as follows to customize the energy-saving plan settings:

**1** Under **Control Panel ► System and Security ► Energy Options**, open the system settings that specify the behavior when the power switch is pressed or the computer is folded shut.

**2** Change the following settings:

- **When pressing the power switch:** Do nothing
- **When pressing the energy saving button:** Do nothing
- **When closing the lid:** Do nothing
- **Enable fast start-up:** Deactivated



### NOTE

To change the **Turn on fast start-up** option, you may need to enable it first as an administrator. To do this, click on **Some settings are currently unavailable** in the window.

**3** Open the energy-saving plan settings under **Control Panel ► System and Security ► Energy Options**. Now click on **Change advanced energy settings**.

**4** Change the following settings:

- Under **Saving energy**:
  - **Deactivation after:** Never
  - **Allow hybrid standby mode:** Off
  - **Hibernate after:** Never
- Under **USB settings**:
  - **Selective USB energy-saving settings:** Disabled

**5** If communication problems occur, proceed as follows:

Open the **Device manager** via the Windows start menu.

Maximize the **USB controller** entry.

Open the context menu of the USB controller used with the right mouse button. Disable the **Computer can switch off the device to save energy** option under **Properties ► Energy management**.

If it is not known which USB controller is used, then adjust the properties of all USB controllers.

### 3 Single workplace installation

With the single workplace version **MagIC Net Basic**, **MagIC Net Compact** or **MagIC Net Professional**, you can install both the MagIC Net client and the server on the computer.

- 1 Prior to the installation, disconnect all the USB devices from the computer on which **MagIC Net** is to be installed.

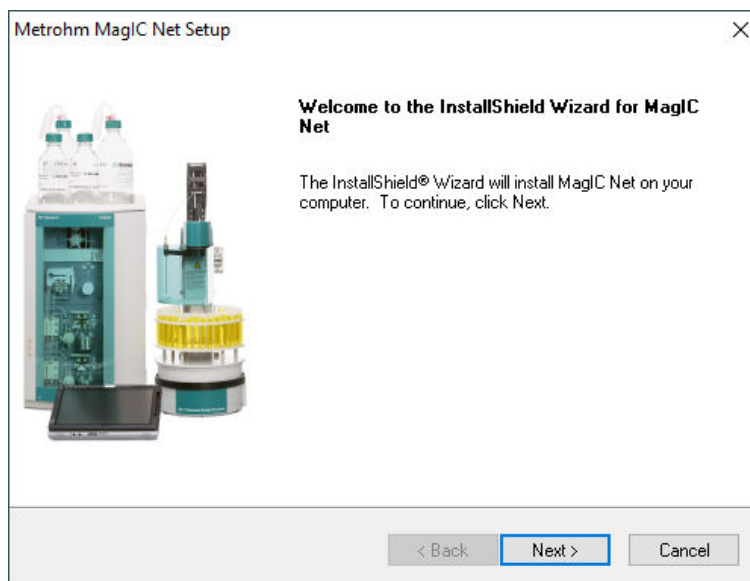
If the OMNIS Software is already installed on the computer, exit the **Metrohm OMNIS DeviceServer** service via the Windows Task Manager.

- 2 Connect the USB flash drive with the **MagIC Net** installation file to the computer and start the **setup.exe** file.

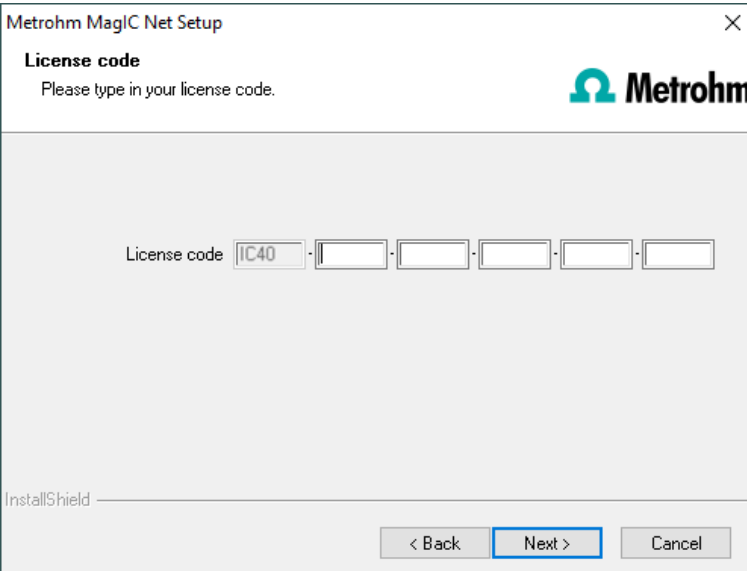
If the minimum system requirements are not met (see above), a corresponding message appears. Click on **[Yes]** if you would like to install the program nonetheless.

Afterwards, click on **[Next >]**.

- 3 During the installation process, the Welcome screen appears first. Click on **[Next >]** to install the software.



- 4 Read the license agreement for **MagIC Net** and accept it with **[Yes]**.
- 5 After having accepted the license agreement, a window will appear where you can enter the license code.



**Metrohm MagIC Net Setup** [Close]

**License code**  
Please type in your license code.

Metrohm

License code: IC40 - [ ] - [ ] - [ ] - [ ] - [ ]

InstallShield

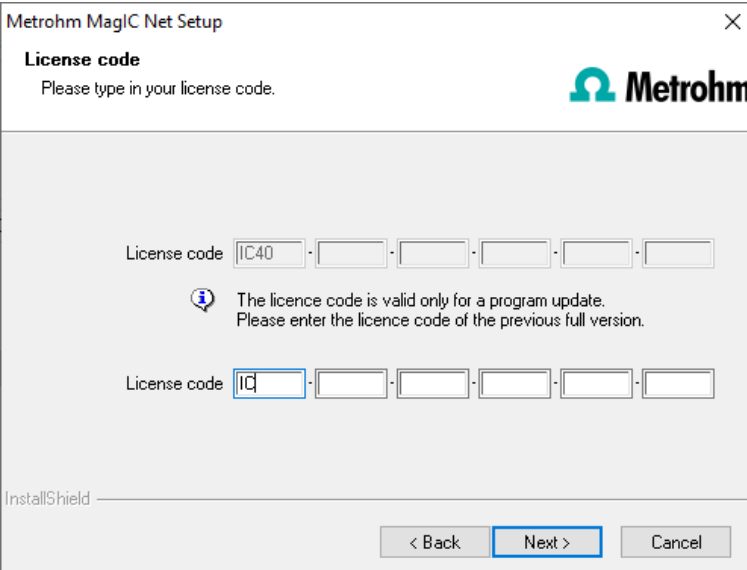
< Back   **Next >**   Cancel

Enter the license code for **MagIC Net Basic**, **MagIC Net Compact** or **MagIC Net Professional** and then click on **[Next >]**.



#### NOTE

If you have entered the license code of an update license, then the license code of the previous full version will additionally be requested.



**Metrohm MagIC Net Setup** [Close]

**License code**  
Please type in your license code.

Metrohm

License code: IC40 - [ ] - [ ] - [ ] - [ ] - [ ]

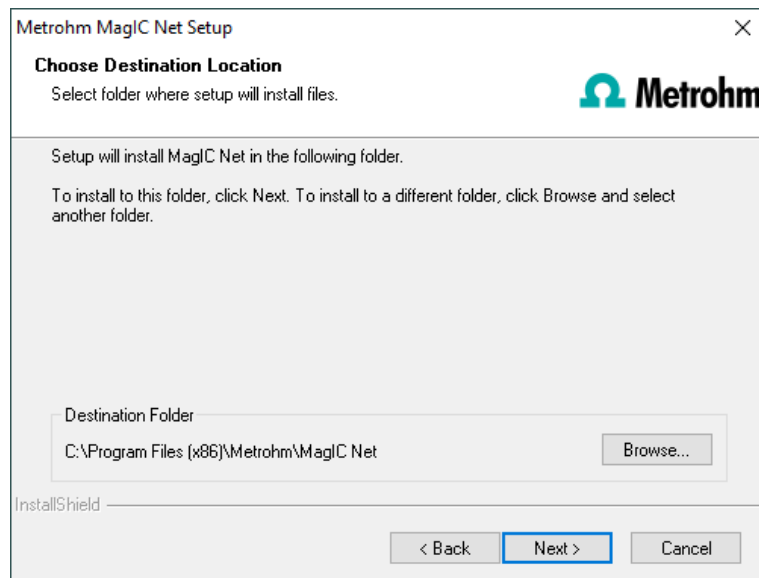
The licence code is valid only for a program update.  
Please enter the licence code of the previous full version.

License code: ID - [ ] - [ ] - [ ] - [ ] - [ ]

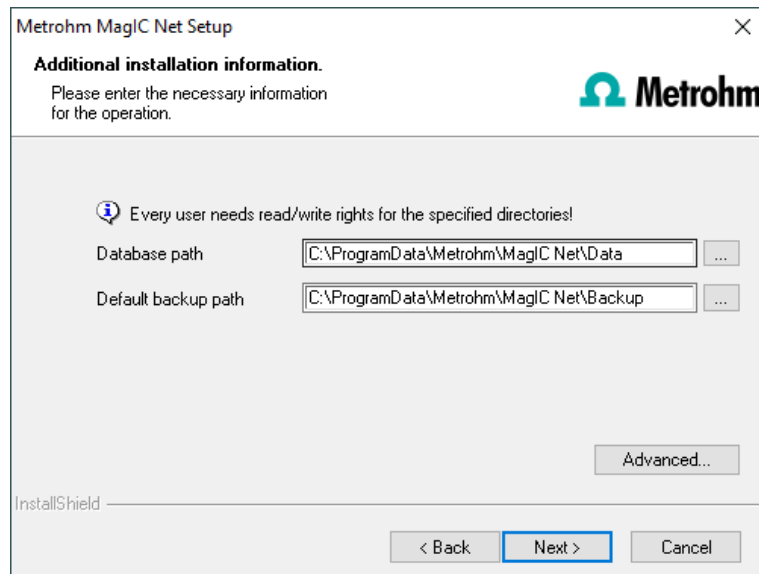
InstallShield

< Back   **Next >**   Cancel

- 6** Confirm the target folder for the **MagIC Net** installation with **[Next >]** or select a different target folder with **[Browse...]**.



- 7** You can define the paths for the database files and default backup files in the **Additional installation information** window:

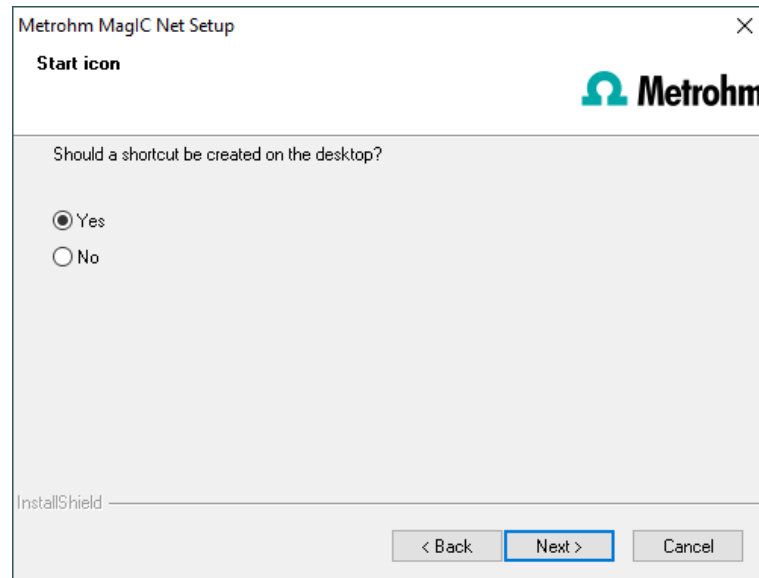


#### NOTE

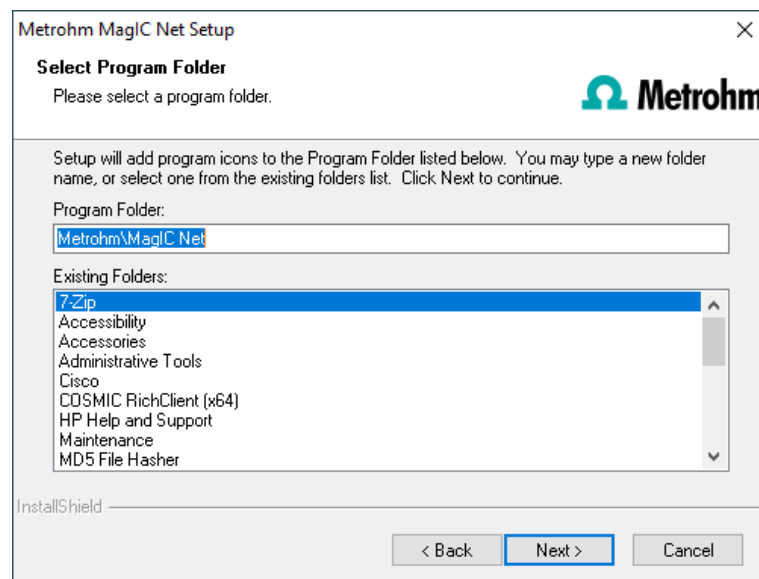
The default paths are different for the various operating systems.  
The database path must not be on a network drive.  
The default backup path may also be on a network drive.

You can change the ports **MagIC Net** uses to communicate with the database server and the administration server with the **[Advanced...]** button. If the ports are already used, an appropriate error message will appear. Ask your system administrator for more information about this. Continue with **[Next >]**.

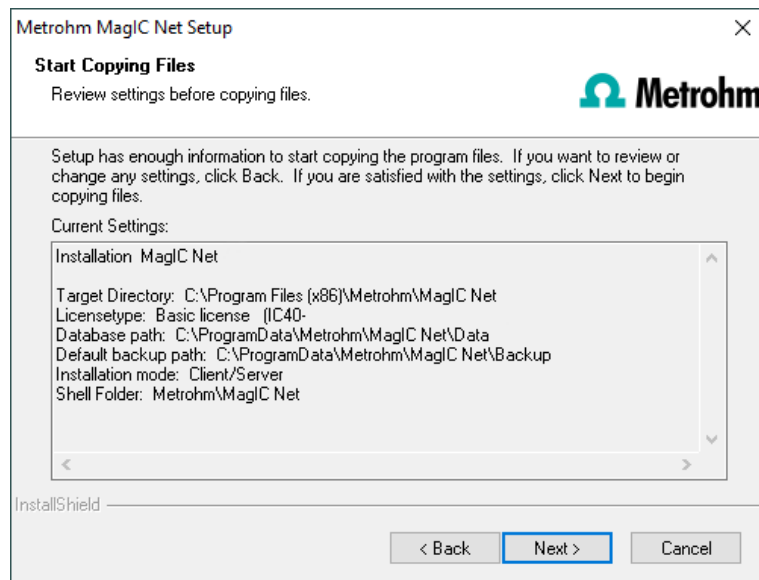
- 8 If you would like to create a shortcut on your desktop to start the **MagIC Net** software, activate **[Yes]** and then click on **[Next >]**.



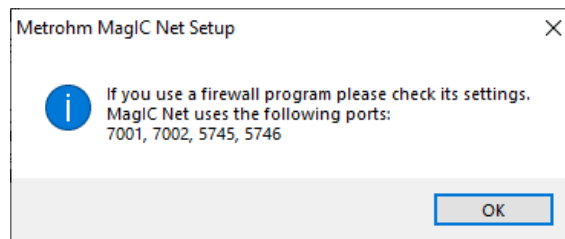
- 9 Confirm the program folder with **[Next >]** or select a different program folder.



- 10 The installation settings can now be checked. Start the copy process with **[Next >]**.



- 11** The following message appears during the installation of **MagIC Net**:



This message points out again which ports **MagIC Net** uses. Write down these ports and inform your system administrator in case **MagIC Net** is not able to connect to the database. Confirm the message with **[OK]**.

**MagIC Net** will now be installed.



#### NOTE

During the installation, all device drivers that are required for controlling the supported USB devices are installed or updated.

Anti-virus programs can prevent the unpacking of the device drivers. If an error occurs, exclude the installation pathway for MagIC Net from the virus scan.

If the driver software needs to be updated, a message appears. Confirm the installation by clicking on the **[Install]** button.

- 12** Once the copying procedure has been completed, you can make further workplace settings:

The option **This client ID must exist in the current MagIC Net system.** can only be activated if a database from a previous installation already exists or if you want to connect to a database server on another computer.

If you enable this option, then **MagIC Net** checks whether the identifier you have entered exists in the database. If this is the case, the identifier and all associated settings will be adopted. With this option, reinstalling a client is much easier.

Click on **[Next >]**. If the database ports are not available, an appropriate error message will appear and the installation will be canceled. In this case, check your server and firewall settings before installing the program again.

- 13** At the end of the installation, the file **info.txt** will be created. This file contains all relevant information concerning your current **MagIC Net** installation. Save this file on your hard drive for future reference and print it (add to installation qualification).



#### NOTE

An **InstallLog** file can be found in the installation directory of **MagIC Net** under ...bin\InstallLog. It contains a listing of all files copied to your computer during the installation and a confirmation that the installation has been successfully completed.

- 14** Complete the installation with **[Finish]**.

If the OMNIS Software is already installed on the computer, restart the **Metrohm OMNIS DeviceServer** service via the Windows Task Manager.



## Fonts

For the correct display of East Asian fonts (e.g. in reports), it may be necessary to add the corresponding fonts. There are two options to do this. Carry out only one of the two described options.

- Install the missing language: **Windows Settings ► Time & Language ► Language ► Add a language**
- Download the fonts for all languages: **Windows Settings ► Personalization ► Fonts ► Download fonts for all languages**

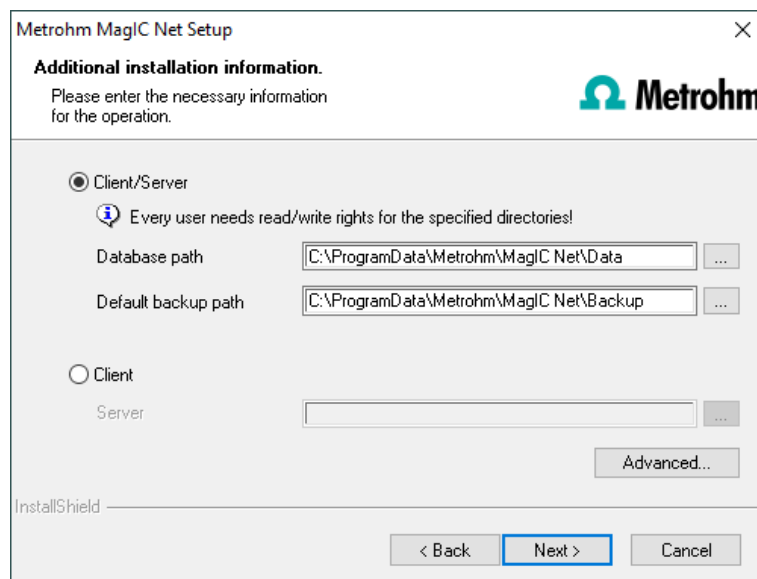
The procedure may differ from the described procedure, depending on the Windows version and operating system build used. Additional information on how to proceed can be found under [Language packs for Windows](#).

## 4 Client/server installation

With the **MagIC Net multi** version (multi-client version with 3 licenses) you can select during the installation whether you want to install only a **Client** or a **client** and a **server** (database server) on your computer.

If you want to install only a client on your computer, a server to which the client will be connected must have been previously installed on another computer.

- 1** Follow steps **1** to **6** of the single workplace installation (*see chapter 3, page 3*).
- 2** The **Additional installation information** dialog appears. Here you can select whether you want to install only a **client** or a **client** and a **server** (database server) on your computer.




The option **Client/Server** installs the client and the database server on your computer. Select this option if your computer will be used as server.



#### NOTE

The default paths are different for the various operating systems.  
The database path must not be on a network drive.  
The default backup path may also be on a network drive.

With **Client**, only the **client** will be installed and you have to select the database server you would like to use with the  button. The database server must already be installed. The network server name or the IP address is accepted as the name.

You can change the ports **MagIC Net** uses to communicate with the database and administration server with the **[Advanced...]** button. If the ports are already used, an appropriate error message will appear. Ask your system administrator for more information about this. Continue with **[Next >]**.

- 3** All further installation steps correspond to those of the single workplace installation from **point 8** onwards (*see chapter 3, page 3*).

#### Fonts

For the correct display of East Asian fonts (e.g. in reports), it may be necessary to add the corresponding fonts. There are two options to do this. Carry out only one of the two described options.

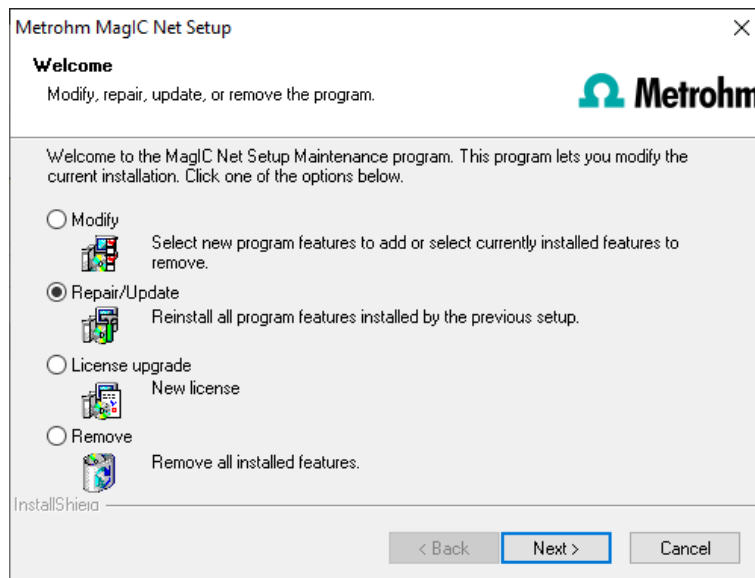
- Install the missing language: **Windows Settings ► Time & Language ► Language ► Add a language**
- Download the fonts for all languages: **Windows Settings ► Personalization ► Fonts ► Download fonts for all languages**

The procedure may differ from the described procedure, depending on the Windows version and operating system build used. Additional information on how to proceed can be found under [Language packs for Windows](#).

## 5 Modifying/repairing/removing the installation and upgrading the license

In order to carry out modifications on the current **MagIC Net** installation, start the **setup.exe** file from the USB flash drive or click under:

**Control panel ► Programs ► Programs and Features** on **Metrohm MagIC Net**. Then select **Uninstall/Change**:



## Modify

With this option you can adjust the paths to the database and backup files and change the ports which **MagIC Net** uses for communication.

With the **MagIC Net Multi** version you can additionally change the path to the database server.

If the database path is changed, the existing databases are automatically copied to the new location.

## Repair/Update

With this option you can **repair** an existing defective installation or **update** an older installation.

- **Repairing the installation**

In case of a defective **MagIC Net** installation because, for instance, a DLL file is missing or a program file has been deleted by mistake, **MagIC Net** can be repaired with this option.

- **Updating the installation**

In case an older version of **MagIC Net** is installed, it will be updated to the new version of **MagIC Net**. For MagIC Net Compact / Professional, see *Chapter 6, page 12*. For MagIC Net Multi, see *Chapter 7, page 20*.



### CAUTION

During the updating of older MagIC Net versions to MagIC Net 4.2, the databases will be converted to the new version. Depending on the database size, this may take some time. A progress bar showing the status of the conversion is displayed for each database.

The computer must not be restarted or Windows shut down as long as the conversion is running!

Database migration for performance optimizations must be started manually after the update of MagIC Net regardless of the conversion to the latest database version (*see chapter 6.2, page 15*).

## License upgrade

A direct upgrade of your current installation to a **MagIC Net** version with additional features is possible with this option:

- **MagIC Net Compact** to **MagIC Net Professional** or **MagIC Net Multi**
- **MagIC Net Professional** to **MagIC Net Multi**

In order to do this, enter your new license code in the next dialog window.

## Remove

This option removes your **MagIC Net** installation. Data which has been generated after the installation (e.g. database entries, log files, exported data, etc.) will not be deleted.

# 6 Program update with MagIC Net Compact/Professional

During the program update, the configuration database (system configuration, methods, templates) and the determination databases are automatically updated for further use with the new version of **MagIC Net Compact/Professional**.



### NOTE

The files in the database and backup directory will be retained when the program is updated.

Files in the subdirectories **bin**, **jre**, **lib**, **res**, **doc** and **examples** will be overwritten by the update. The files in these directories which are not updated during the update will be deleted. The deleted files are listed in the **Install-Log**.

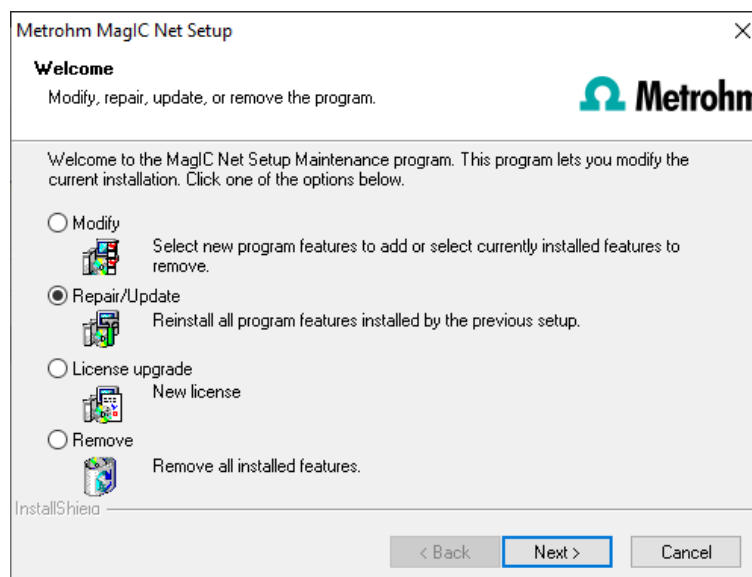
## 6.1 Program update

### Program update

- 1 Save the configuration database to an external directory using the backup function of **MagIC Net**. In the **Configuration** program part, select the **File ► Save ► Manually** menu item. Select the **Backup directory**, enter a name for the backup file and click on **[Start]**. The backup is carried out. Then copy the backup file to an external storage medium.
- 2 If desired, export the methods to an external directory in addition to the backup with the configuration database (see above). To accomplish this, select the **File ► Method manager...** menu item in the **Method** program part. Select the desired **Method group**, mark all of the methods to be exported and click on **[Edit] ► Export....** Select the desired export

directory and click on **[OK]**. The methods are exported to the desired directory. Then copy the method files to an external storage medium.

- 3** Save all determination databases created by you to an external directory using the backup function of **MagIC Net**. In the **Database** program part, select the **File ► Database manager...** menu item. Select the desired database and click on **[Backup]**. Select the **Backup directory**, enter a name for the backup file and click on **[Start]**. The backup is carried out. Then copy the backup file to an external storage medium.
- 4** Also save further files created by you in the installation directory (e.g., export files) to an external directory or to an external storage medium.
- 5** Close **MagIC Net**. Connect the USB flash drive with the installation file to the computer and start the **setup.exe** file. Then select **Repair/Update program** and click on **[Next >]**.



- 6** Enter the update license code for **MagIC Net Compact** or **MagIC Net Professional** and click on **[Next >]**.

Metrohm MagIC Net Setup

**License code**  
Please type in your license code.

Metrohm

License code IC40 - - - - -

InstallShield

< Back Next > Cancel

7



## CAUTION

During the updating of older MagIC Net versions to MagIC Net 4.2, the databases will be converted to the new version. Depending on the database size, this may take some time. A progress bar showing the status of the conversion is displayed for each database.

The computer must not be restarted or Windows shut down as long as the conversion is running!

Database migration for performance optimizations must be started manually after the update of MagIC Net regardless of the conversion to the latest database version (see chapter 6.2, page 15).

Complete the installation with **[Finish]**.



## NOTE

An **UpdateLog** file with a list of all files that have been copied to your computer during the program update and with a confirmation of a successful installation is saved in the **MagIC Net** installation folder (default: C:\Program Files(x86)\Metrohm\MagIC Net) under bin\Install-Log.

## 6.2 Migrating databases and methods

Performance improvements are available from MagIC Net 4.2. Existing databases and methods must be migrated into another data format on a one-time basis to improve performance.



### NOTE

Perform the migration of databases and methods only when updating to MagIC Net 4.2.

Metrohm recommends migrating all databases and methods after updating to MagIC Net 4.2.



### NOTE

Depending on the database size, migration may take some time. A progress bar shows the status of the migration.

During migration, MagIC Net cannot be used elsewhere.

### Prerequisite:

- To migrate databases and methods, they must not be open. Check to ensure that no databases or methods are open on any client.

### 1 Open database management with **Database ► File ► Database management....**

In the database table, the line headers are highlighted in yellow. The entries in the **Name** field are highlighted in blue. This means that the database migration is still pending. Once migration has been performed, the marking disappears.

2



### NOTE

Each database must be migrated individually. Multiple databases cannot be migrated at the same time. Do not start the migration of a database until after any previous migrations have been completed.

Select a database. Perform migration with **[Process] ► Migrating... ► Migrating**.

Perform this step for all databases.

### 3 Open the method manager with **Method ► File ► Manage methods... ► Manage methods**.

In the method table, the line headers are highlighted in yellow. The entries in the **Name** field are highlighted in blue. This means that the method migration is still pending. Once migration has been performed, the marking disappears.

- 4 Select all methods. Perform migration with **[Process] ► Migrating... ► Migrating**.

All databases and methods were migrated. MagIC Net runs with improved performance.

## 6.3 Checking access rights

If MagIC Net 3x is upgraded to a version with new access rights or security settings, then following behavior may occur:

The access rights are structured hierarchically (tree structure). If new child nodes are added to an existing node in the new program version, then the child nodes are enabled by default. The child nodes are enabled even if the user did not have permission for the parent node in the previous program version. The parent node settings may also change as a result of the update.



### NOTE

After updating from MagIC Net 3.x to a higher version, check the access rights and adjust them if necessary.

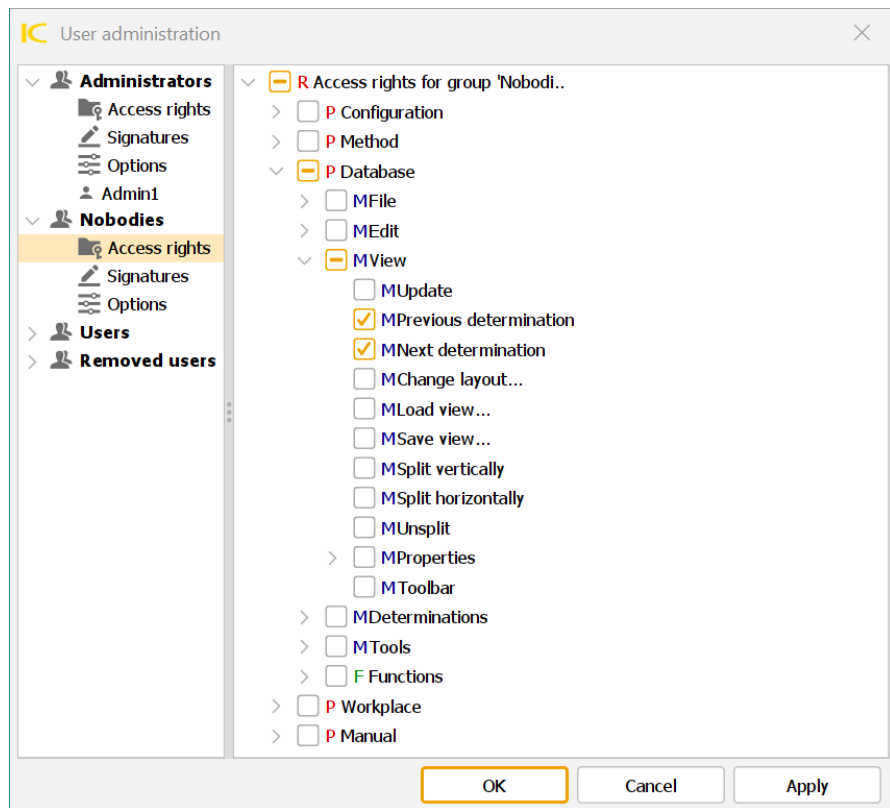
If MagIC Net is upgraded to a version other than the next higher version, check the access rights added in the intervening versions as well.

Example: If an update from MagIC Net 3.0 to MagIC Net 4.2 is performed, check the access permissions that were added in MagIC Net 3.1, MagIC Net 3.2, MagIC Net 3.3 and MagIC Net 4.0.

### New access rights in MagIC Net 3.1

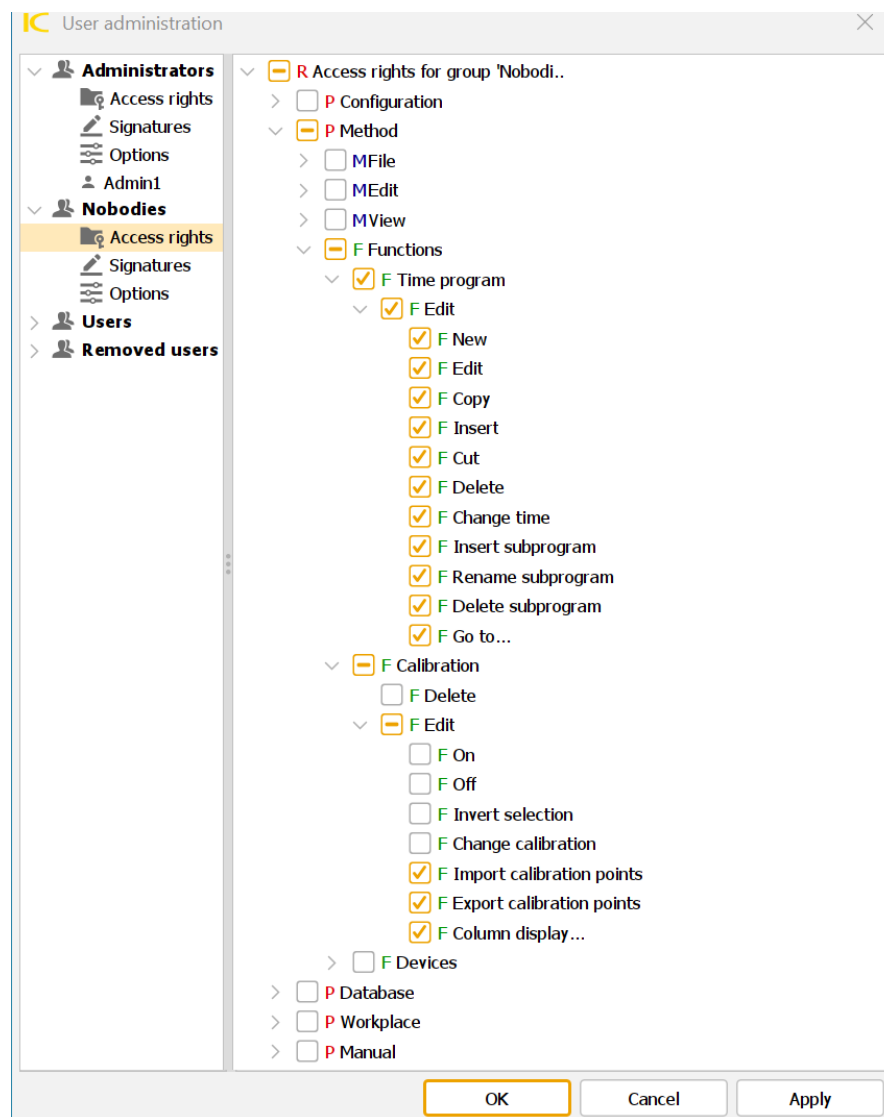
- **Database ► View ► Previous determination**
- **Database ► View ► Next determination**





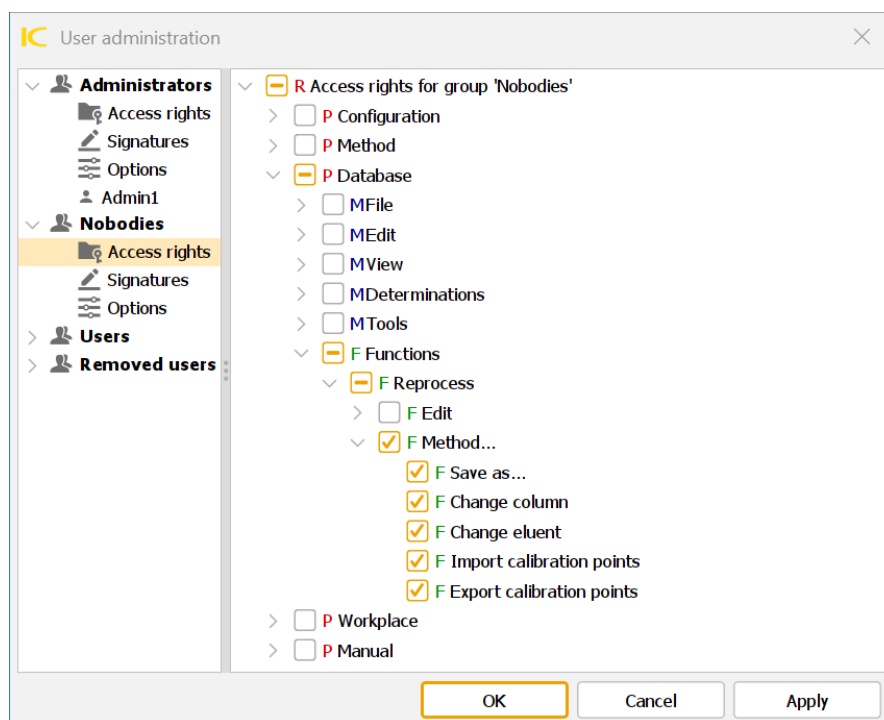
### New access rights in MagIC Net 3.2

- Method ► Functions ► Time program ► Edit ► New
- Method ► Functions ► Time program ► Edit ► Edit
- Method ► Functions ► Time program ► Edit ► Copy
- Method ► Functions ► Time program ► Edit ► Insert
- Method ► Functions ► Time program ► Edit ► Cut
- Method ► Functions ► Time program ► Edit ► Delete
- Method ► Functions ► Time program ► Edit ► Change time
- Method ► Functions ► Time program ► Edit ► Insert subprogram
- Method ► Functions ► Time program ► Edit ► Rename subprogram
- Method ► Functions ► Time program ► Edit ► Delete subprogram
- Method ► Functions ► Time program ► Edit ► Go to...



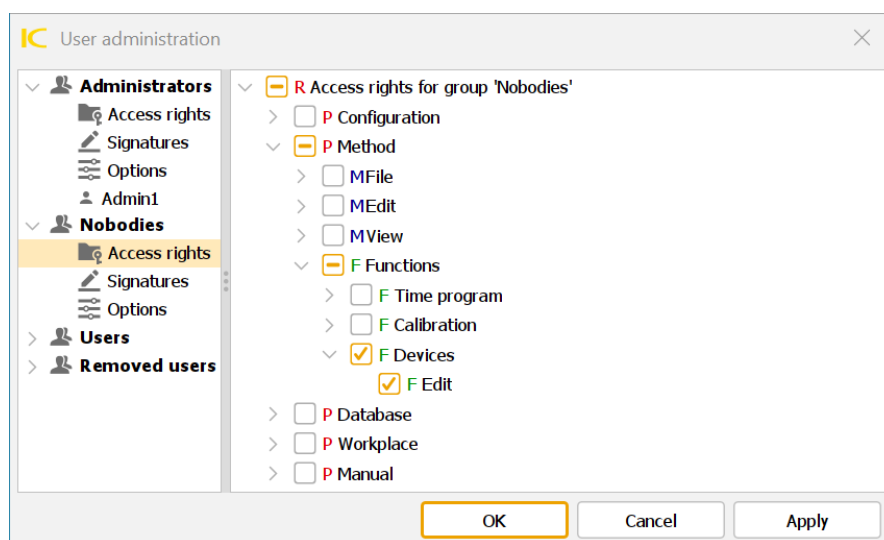
### New access rights in MagIC Net 3.3

- Database ► Functions ► Reprocess ► Method... ► Save as...
- Database ► Functions ► Reprocess ► Method... ► Change column
- Database ► Functions ► Reprocess ► Method... ► Change eluent
- Database ► Functions ► Reprocess ► Method... ► Import calibration points
- Database ► Functions ► Reprocess ► Method... ► Export calibration points



## New access rights in MagIC Net 4.0

- Method ► Functions ► Devices ► Edit



## 6.4 Importing configuration data

If a configuration database with security settings or user administration is imported, the settings of the imported configuration database are not applied immediately.

Do not print the configuration report directly after importing a configuration database. The printed settings do not correspond to the actual settings.

Check the security settings and user administration after importing a configuration database. Otherwise there is a risk of being excluded from the application. After the settings have been checked, restart the computer.

Print the configuration report only after restarting the clients, if desired.

## 7 Program update with MagIC Net Multi

During the program update, the configuration database (system configuration, methods, templates, user-specific data for all clients) and the determination databases on the server are automatically updated for further use with the new version of **MagIC Net Multi**.



### NOTE

The files in the database and backup directory will be retained when the program is updated.

Files in the subdirectories **bin**, **jre**, **lib**, **res**, **doc** and **examples** will be overwritten by the update. The files in these directories which are not updated during the update will be deleted. The deleted files are listed in the **Install-Log**.

### 7.1 Program update

- 1 Make sure **MagIC Net Multi** is closed on all clients.



### NOTE

In the **bin** subdirectory of the **MagIC Net** installation, you can find the **Clients.exe** application, with which all clients and their status can be displayed.

- 2 Open **MagIC Net Multi** on the server and save the configuration database into an external directory using the backup function of **MagIC Net**. In the **Configuration** program part, select the **File ► Save ► Manually** menu item. Select the **Backup directory**, enter a name for the backup

file and click on **[Start]**. The backup is carried out automatically. Then copy the backup file to an external storage medium.

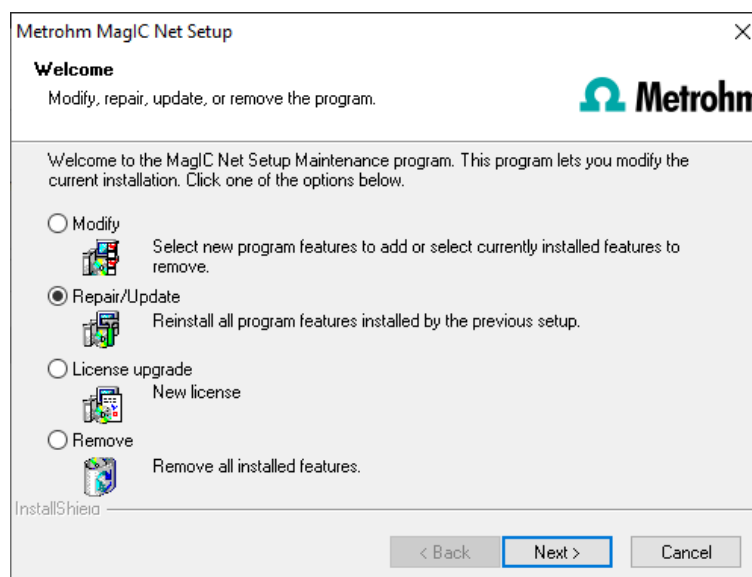
**3** If desired, export the methods in addition to the automatic backup with the configuration database (see above) into an external directory. To accomplish this, select the **File ► Method manager...** menu item in the **Method** program part. Select the desired **Method group**, mark all of the methods to be exported and click on **[Edit] ► Export....** Select the desired export directory and click on **[OK]**. The methods are exported to the desired directory. Then copy the method files to an external storage medium.

**4** Save all of the determination databases on the server to an external directory using the backup function of **MagIC Net**. In the **Database** program part, select the **File ► Database manager...** menu item. Select the desired database and click on **[Backup]**. Select the **Backup directory**, enter a name for the backup file and click on **[Start]**. The backup is carried out automatically. Then copy the backup file to an external storage medium.

**5** Also save further files created in the installation directory (e.g. export files) to an external directory or to an external storage medium.

## **6 Updating the server**

Close **MagIC Net Multi** on the server and on all clients. Connect the USB flash drive with the installation file to the computer and start the **setup.exe** file. Then select **Repair/Update program** and click on **[Next >]**.



**7** Enter the update license code for **MagIC Net Multi** and click on **[Next >]**.

8



#### NOTE

The update of **MagIC Net Multi** consists of the server license and three client licenses. If an existing installation contains additional client licenses, these will be deleted.

Click on **[OK]** in the corresponding message in order to continue the installation.

9



#### CAUTION

During the updating of older MagIC Net versions to MagIC Net 4.2, the databases will be converted to the new version. Depending on the size of the database, this may take some time. A progress bar showing the status of the conversion is displayed for each database.

The computer must not be restarted or Windows shut down as long as the conversion is running!

Database migration for performance optimizations must be started manually after the update of MagIC Net regardless of the conversion to the latest database version (*see chapter 6.2, page 15*).

Complete the installation with **[Finish]**.



#### NOTE

An **UpdateLog** file with a list of all files that have been copied to the server during the program update and with a confirmation of a successful installation is saved in the **MagIC Net** installation folder (default: C:\Program Files(x86)\Metrohm\MagIC Net) under the server's bin\InstallLog.

- 10** In case additional licenses have been removed during the server update, or if further additional licenses are to be added, the **Administrator** can enter them in **MagIC Net** (dialog: **Configuration ► Tools ► Program administration ► Licenses ► Add licenses**) (see chapter 7.2, page 24).

#### **11 Updating clients**

Connect the USB flash drive with the installation file to each client in turn and start the **setup.exe** file. Then select **Repair/Update program** and click on **[Next >]**. Complete the installation with **[Finish]**.



#### NOTE

To facilitate the updating of many clients at once, the installation can be copied from the USB flash drive to a writable medium and the file **magic\_init.ini** can be modified. There, user-defined parameters for the installation (license code, installation path, server name, etc.) can be set in advance, so that one needs only click through the installation.

An **UpdateLog** file with a list of all files that were copied to the client computer at the time of a program update and with a confirmation of the success of the installation can be found in the **MagIC Net** client's installation folder (standard: C:\Program Files(x86)\Metrohm\MagIC Net) under bin\InstallLog.

## 7.2 Adding additional licenses

If additional licenses were removed at the time of the server update or if further additional licenses are to be added, proceed as follows:

- 1 Open the directory **C:\Users\'Username\AppData\Local\VirtualStore\Program Files (x86)\Metrohm\MagIC Net\bin**. If there is a file there named **license.mlic**, delete it. Repeat this for each user.
- 2 Right-click on the file **setup.exe** and select **Run as administrator**.
- 3 Add the desired licenses in the **Configuration** program part under **Extras ► Program administration ► Licenses ► Add licenses**.

The file **license.mlic**, which contains the standard license code and the additional license codes, is stored in the **bin** directory of the program installation (e.g., **C:\Program Files(x86)\Metrohm\MagIC Net\bin**).



### NOTE

For additional information on adding additional licenses, please refer to *Chapter 8, page 25*.

## 7.3 Migrating databases and methods

Performance improvements are available from MagIC Net 4.2. Existing databases and methods must be migrated into another data format on a one-time basis to improve performance after a MagIC Net update (*see chapter 6.2, page 15*).



### NOTE

#### Notes on migration in MagIC Net Multi

- Perform the migration on the server. Migration takes less time on the server than on clients.
- Do not open the affected databases and methods on any client during migration.
- During a database migration, do not run any determinations on any client that uses the affected database.
- Do not start the affected methods on any client during a method migration.



## 7.4 Checking access rights

After updating from MagIC Net 3.x to a higher version, check the access rights and adjust them if necessary (*see chapter 6.3, page 16*).

## 7.5 Importing configuration data

If a configuration database with security settings or user administration is imported, the settings of the imported configuration database are not applied immediately.

Do not print the configuration report directly after importing a configuration database. The printed settings do not correspond to the actual settings.

Check the security settings and user administration after importing a configuration database. Otherwise there is a risk of being excluded from the application. After the settings have been checked, restart the computer. In MagIC Net Multi, restart all clients after importing a configuration database on a client.

Print the configuration report only after restarting the clients, if desired.

# 8 Adding additional licenses

### General

The supported Windows versions have a UAC (User Account Control), which permits running tasks either as non-administrator or as administrator (without changes of user, switching off or similar). For more information about this function, see <https://docs.microsoft.com/en-us/windows/security/identity-protection/user-account-control/how-user-account-control-works>.

This function can cause difficulties with client/server installations of **MagIC Net**.

### Problem description

Additional licenses for the program should be added. For this purpose, the license code for an additional 5 licenses, for example, has been added (on the server) in the **Configuration** program part in the **Program administration** dialog window (accessible via the **Tools ► Program administration...** menu item, **Licenses** tab).

Normally the **license.mlic** file, which contains the standard license code and the additional license codes, is stored in the **bin** directory of the program installation (e.g. **C:\Program Files(x86)\Metrohm\MagIC Net\bin**).

However, it may happen that the 5 licenses have been added and the **license.mlic** file contains only the standard license code (for 3 licenses). If this is the case, check whether there is a file named **license.mlic** in the **C:\Users\Username\AppData\Local\VirtualStore\Program Files (x86)\Metrohm\MagIC Net\bin** directory. This file contains the license codes for the standard licenses and the 5 newly added licenses, i.e. the additional licenses were stored

in the **VirtualStore** only for the Windows user who was logged in on the PC at the time the additional licenses were added.

On the server, the program recognizes all of the licenses. The operating system adds the **license.mlic** file from the **C:\Users\'Username\'AppData\Local\VirtualStore\Program Files (x86)\MagIC Net\bin** directory to the detail list of the **C:\Program Files (x86)\Metrohm\MagIC Net\bin** directory.

The **license.mlic** file in the **C:\Program Files (x86)\Metrohm\MagIC Net\bin** directory determines the client/server functionality of the database server, however, and here only the basic license is listed. Therefore, problems are to be anticipated when adding additional clients (more than the 3 clients present in the default settings). To fix this, the **license.mlic** file must be deleted from the **VirtualStore**.

### Remedy

- **For new installations**
  - Start the program as an administrator.
  - Add the license code for additional licenses as usual. The **license.mlic** file in the **C:\Program Files (x86)\Metrohm\MagIC Net\bin** directory contains both license codes.
- **For existing installations**
  - In the **C:\Users\'Username\'AppData\Local\VirtualStore\Program Files(x86)\Metrohm\MagIC Net\bin** directory, check whether there is a file present named **license.mlic** and delete it if necessary.
  - Start the program as an administrator.  
Add the license code for additional licenses as usual. The **license.mlic** file in the **C:\Program Files (x86)\Metrohm\MagIC Net\bin** directory contains both license codes.

## 9 User rights for MagIC Net

In order for the logged-in user to be able to access all functions with **MagIC Net**, the Windows system administrator must ensure that the permissions are set for the directories as listed below:

Directory	Permission	Group name or user name
<b>Database directory</b> Directory where the databases will be saved (...Data).	<b>Modify</b>	<b>SYSTEM</b> <b>User*</b>
<b>Backup directory</b> Directory where the backups will be stored (...Backup).	<b>Modify</b>	<b>User*</b>
<b>%PROGRAMDATA%\Metrohm**</b>	<b>Modify</b>	<b>User*</b>
<b>Export directories</b> Directories where the exported files are to be saved.	<b>Modify</b>	<b>User*</b>

Directory	Permission	Group name or user name
<b>PDF directories</b> Directories where the PDF files are to be saved.	<b>Modify</b>	<b>User*</b>
<b>Desktop</b>	<b>Modify</b>	<b>User*</b>
<b>Installation directory, e.g. %PROGRAMFILES(x86)%\Metrohm\MagIC Net</b>	<b>Read &amp; execute</b>	<b>User*</b>
<b>Temp directory: %ALLUSERSPROFILE%\Metrohm\Temp\MagIC Net</b> Directory where the temporary files are saved.	<b>Modify</b>	<b>User*</b>

\* **User** = name of the user who is logged in

\*\* During installation of **MagIC Net** the permission **Full Control** is set for the following groups: **SYSTEM, Administrators, Users, Guests, Main users.**



#### NOTE

The **BackupServer.exe** process must be started for carrying out a backup (backup of the configuration database and of the determination databases). You can check this under "Windows Task Manager".

The **user** must be logged in during the whole backup process.